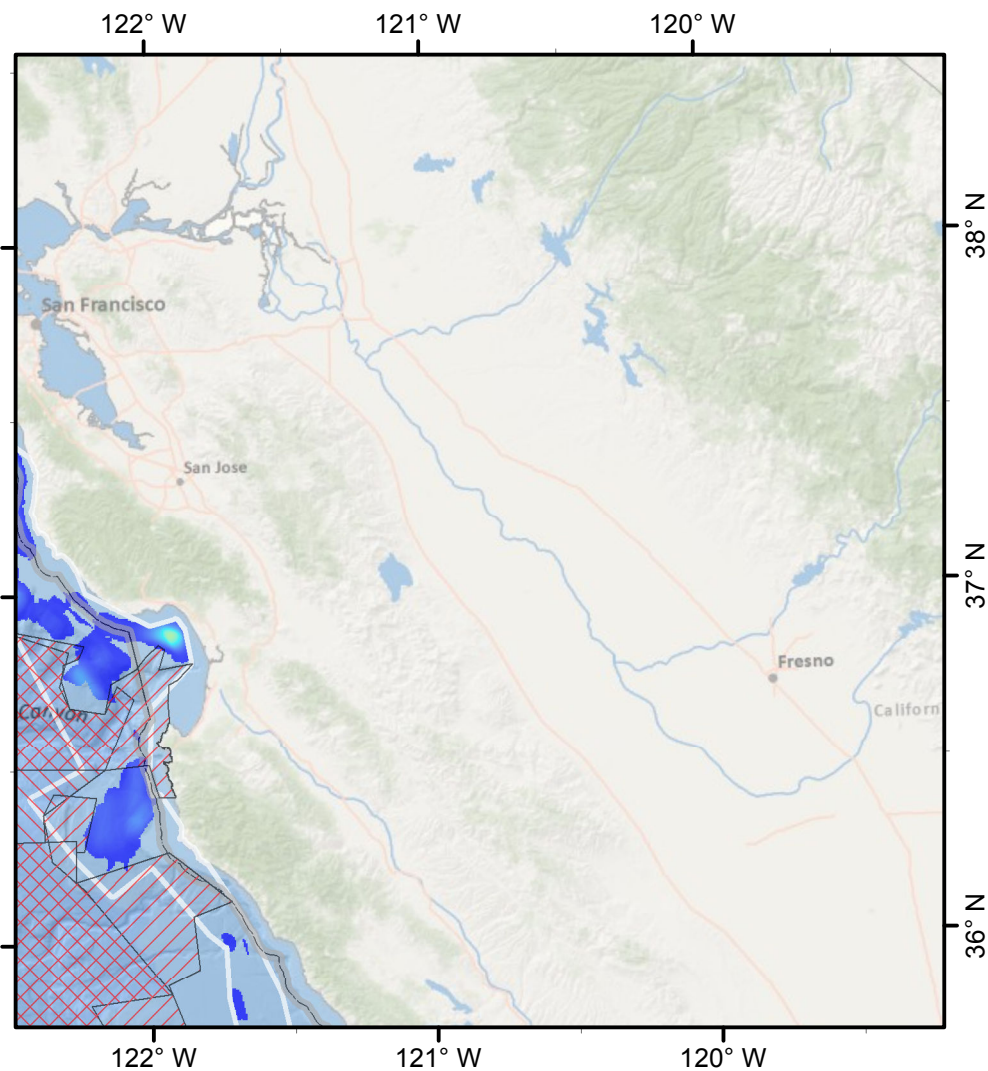
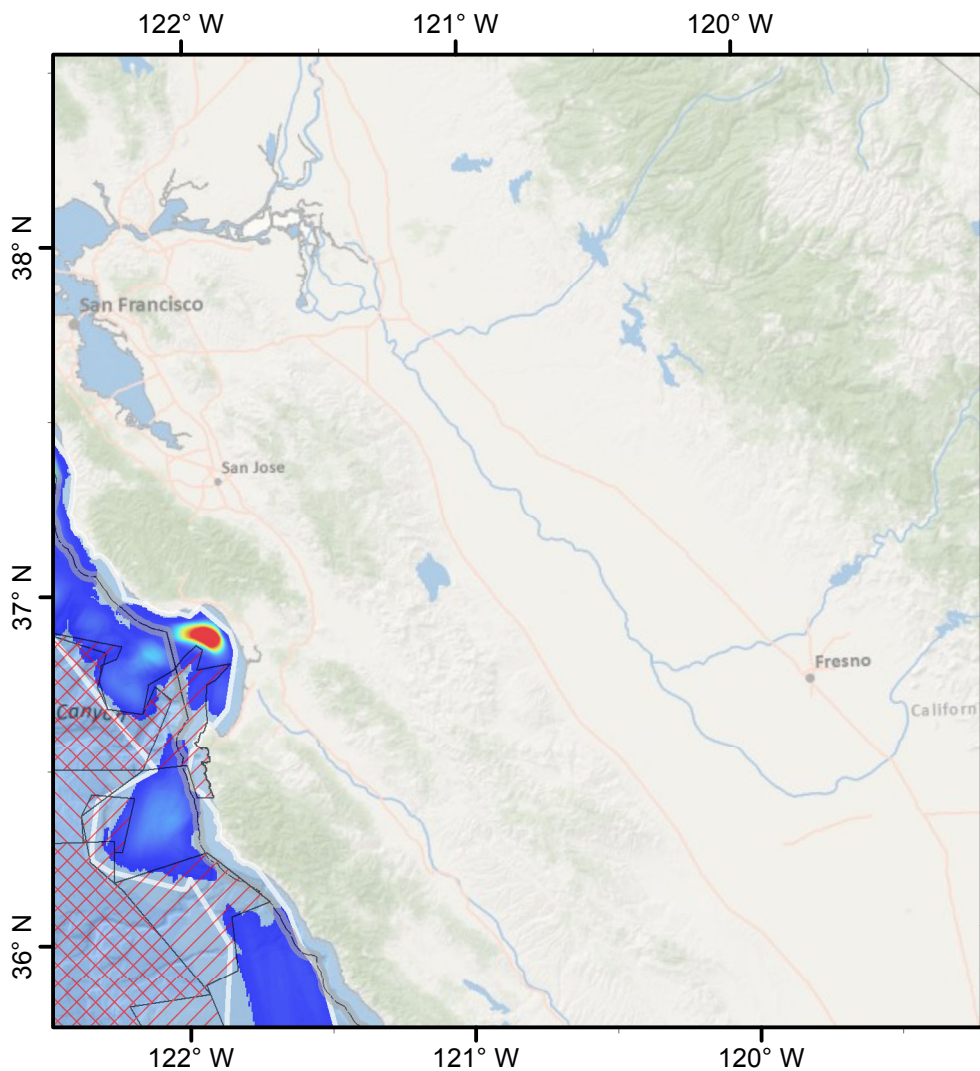


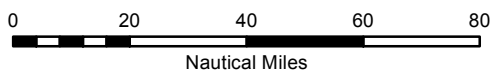
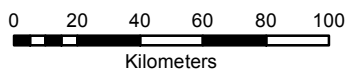
Before

# Bottom Trawl Fishing Effort (PacFIN)

After



**E3**



Map Scale: 1:2,400,000

Date Saved: 20 Aug 2012

Authors: Curt Whitmire & Marlene Bellman (NMFS/NWFSC)

**Effort (km/km<sup>2</sup>)**

High : 221.931

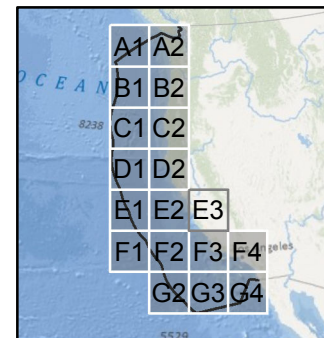


Low : 0.008

Extent Polygon

EFH Cons. Area

State Territorial Sea



Map 6 of 8

Search Radius: 3,000 m  
Cell Size: 500 m